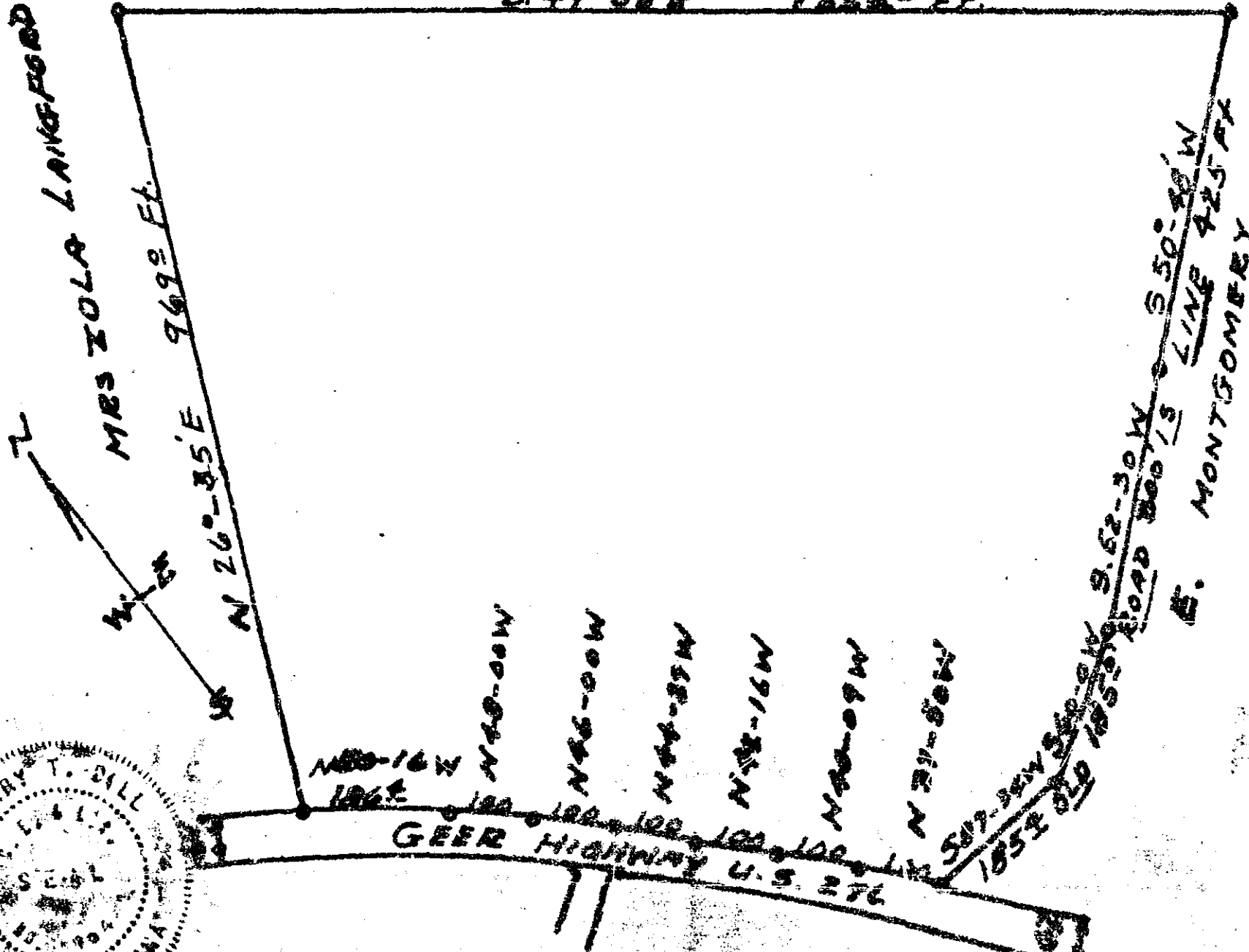


Plat Book VV, Page 103 A

AREA = 24.94 ACRES

TYRE LANGFORD
5.49-85E 1252 FT.



MAY 19 2 40 PM 1961

PLAT OF ESTATE OF MAY 19 1961

Survey by
Terry T. Dill
Reg. C.E. & L.S. #104

MATTIE COLEMAN
Belus Twp. Greenville Co.
South Carolina

28587

VV-103

SEALER

Plat Book VV, Page 103 A
and Recorded in Vol. VV, Page 103 A
Register Means Commission Greenville County, S.C.